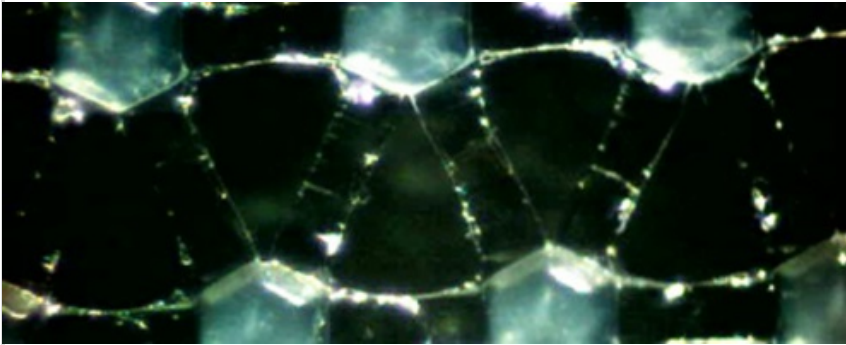


**General Description**



**Description**

A polyethylene net with a thin lower melting bonding layer.

**Processing**

Co-extruded nets are designed for use in heat lamination processes.

**Applications**

- Woundcare dressings requiring a laminated pad with low adherence characteristics.
- First aid dressings
- General lamination

| Typical Property                | Typical Value |
|---------------------------------|---------------|
| Thickness (micron)              | 110           |
| Film Weight (g/m <sup>2</sup> ) | 19            |
| Boss Count (MD) (per 25.4mm)    | 20            |
| Boss Count (TD) (per 25.4mm)    | 35            |
| Tensile Strength MD (gf/cm)     | 700           |
| Tensile Strength TD (gf/cm)     | 500           |
| Nominal Length (lm)             | 1500          |
| Min Length (lm)                 | 1000          |
| Minimum Width (mm)              | 50            |
| Maximum Width (mm)              | 1200          |

Product Information revised 27th April 2015

All statements, product characteristics, and performance data contained herein are believed to be reliable based on observation and testing, but no representations, guarantees, or warranties of any kind are made as to accuracy, suitability for particular applications, or the results to be obtained. Nothing contained herein is to be considered to be permission or a recommendation to use any proprietary process or technology without permission of the owner. No warranty of any kind, expressed or implied, is made or intended.

**SWM INTL**

Broad Lane • Gilberdyke • East Yorkshire • HU15 2TD  
+44 (0) 1430 440757 • [ams@swmintl.com](mailto:ams@swmintl.com) • <https://productfinder.swmintl.com>