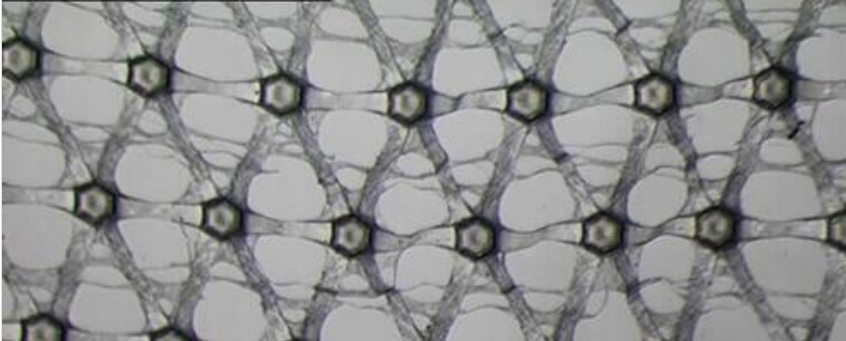


## General Description



Polyethylene (HDPE) net with a thin low melting point EVA based bonding layer. This allows the coextruded net to bond directly to a substrate whilst maintaining the net structure

Typical Property	Typical Value
Thickness (micron)	107
Film Weight (g/m <sup>2</sup> )	15
Boss Count (MD) (per 25.4mm)	23
Boss Count (TD) (per 25.4mm)	24
Tensile Strength MD (gf/cm)	550
Tensile Strength TD (gf/cm)	600
Nominal Length (lm)	1500
Maximum Width (mm)	1950
Min Length (lm)	500
Minimum Width (mm)	50

Product Information revised 3rd December 2015

All statements, product characteristics, and performance data contained herein are believed to be reliable based on observation and testing, but no representations, guarantees, or warranties of any kind are made as to accuracy, suitability for particular applications, or the results to be obtained. Nothing contained herein is to be considered to be permission or a recommendation to use any proprietary process or technology without permission of the owner. No warranty of any kind, expressed or implied, is made or intended.

**SWM INTL**

Broad Lane • Gilberdyke • East Yorkshire • HU15 2TD  
+44 (0) 1430 440757 • [ams@swmintl.com](mailto:ams@swmintl.com) • <https://productfinder.swmintl.com>