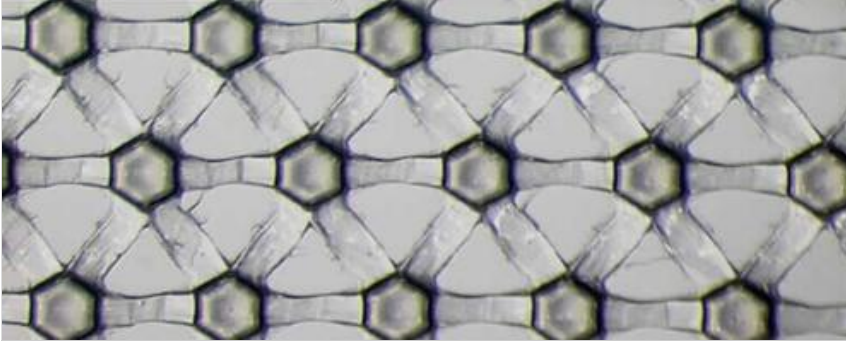


## General Description



Typical Property	Typical Value
Boss Count (TD) (per 25.4mm)	28
Boss Count (MD) (per 25.4mm)	25
Tensile Strength MD (gf/cm)	700
Film Weight (g/m <sup>2</sup> )	18.1
Thickness (micron)	127
Tensile Strength TD (gf/cm)	550
Nominal Length (lm)	2000
Min Length (lm)	800
Minimum Width (mm)	50
Maximum Width (mm)	1640

Product Information revised 27th April 2015

All statements, product characteristics, and performance data contained herein are believed to be reliable based on observation and testing, but no representations, guarantees, or warranties of any kind are made as to accuracy, suitability for particular applications, or the results to be obtained. Nothing contained herein is to be considered to be permission or a recommendation to use any proprietary process or technology without permission of the owner. No warranty of any kind, expressed or implied, is made or intended.

**SWM INTL**

Broad Lane • Gilberdyke • East Yorkshire • HU15 2TD  
+44 (0) 1430 440757 • [ams@swmintl.com](mailto:ams@swmintl.com) • <https://productfinder.swmintl.com>